

Anlieferung

Ausschank

Auf-
zug

15.10

Mehrzweck-
raum EG

3.79

K

3.82

K

Küche

2.70

K

Garderobe

Stube

43

8.97

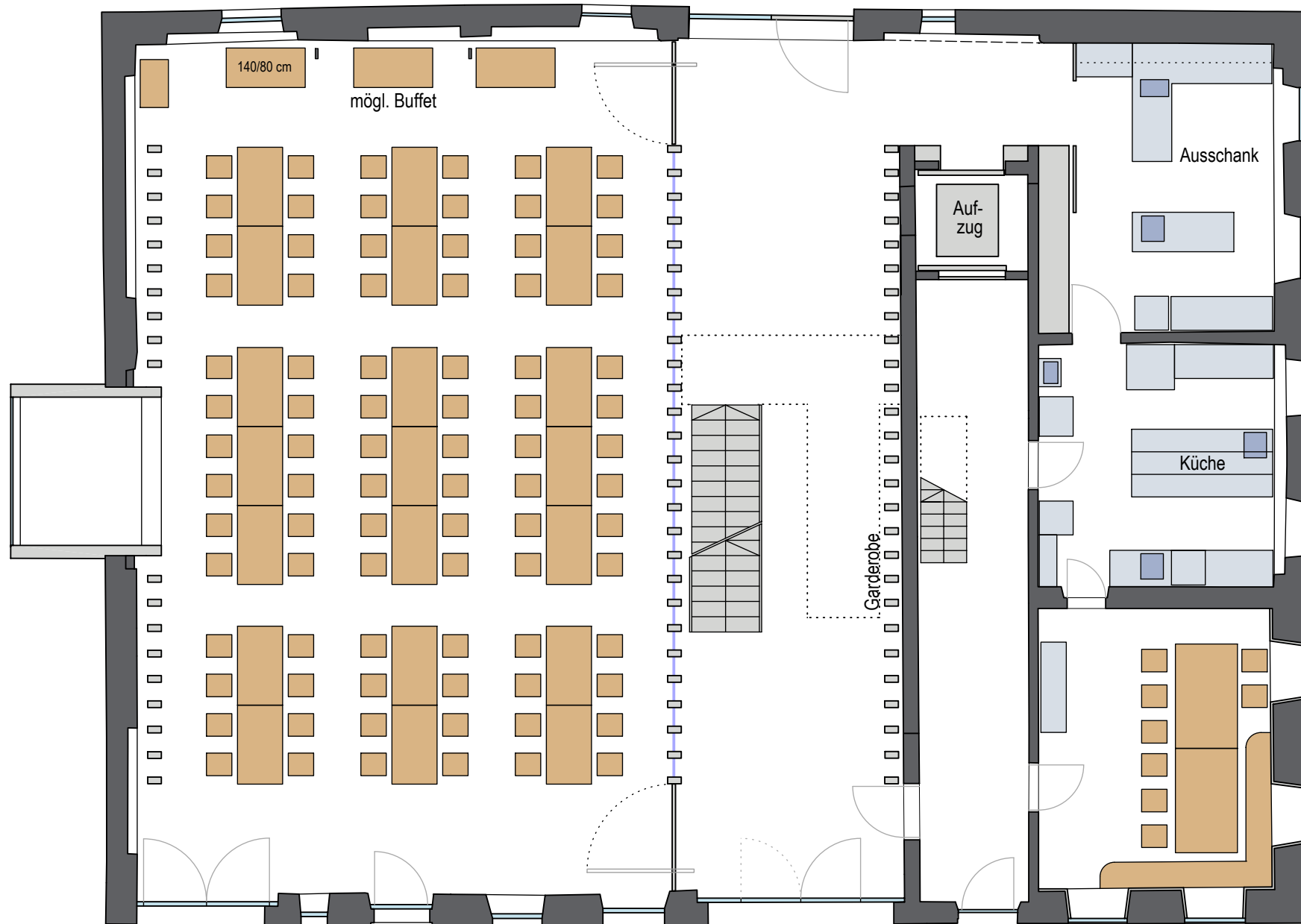
12

EINGANG

EG

84 Pers. 21+3 = 24 Tische

Anlieferung



EINGANG

EG.A1

92+6 Pers. 26+4 = 30 Tische

Anlieferung

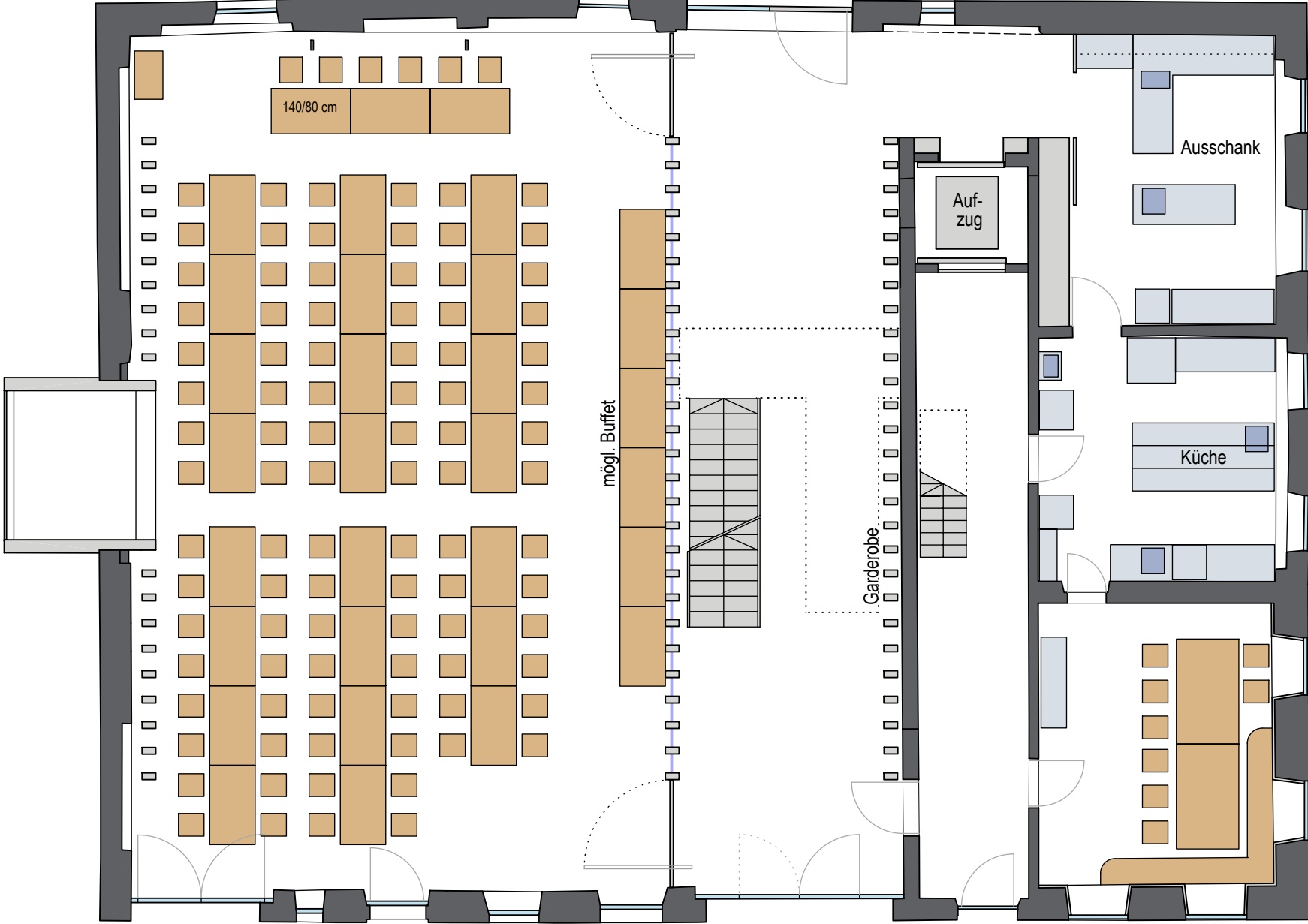


EINGANG

EG.A2

92+6 Pers. 26+6 = 32 Tische

Anlieferung

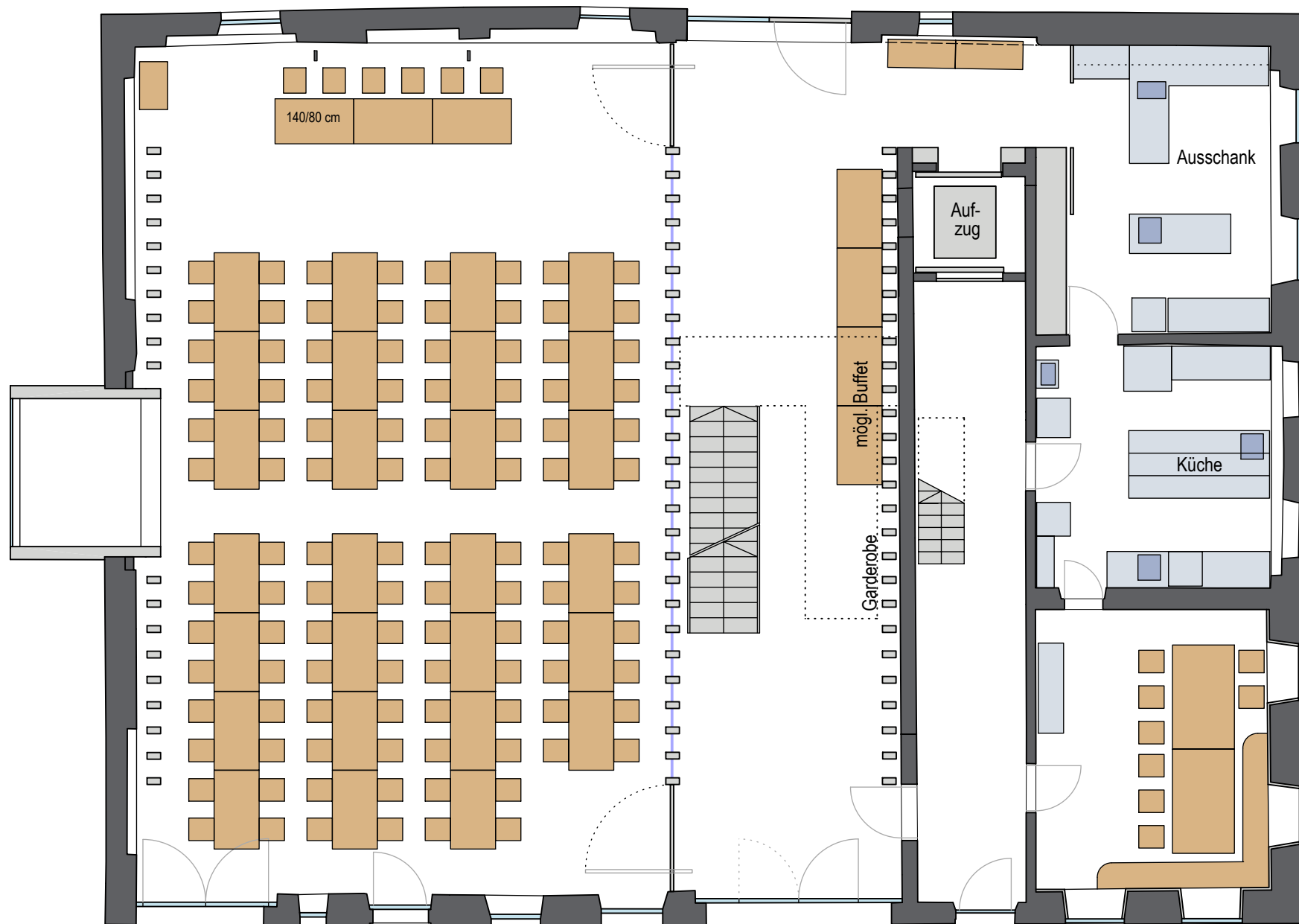


EINGANG

EG.A3

108+6 Pers. 30+4 = 34 Tische

Anlieferung

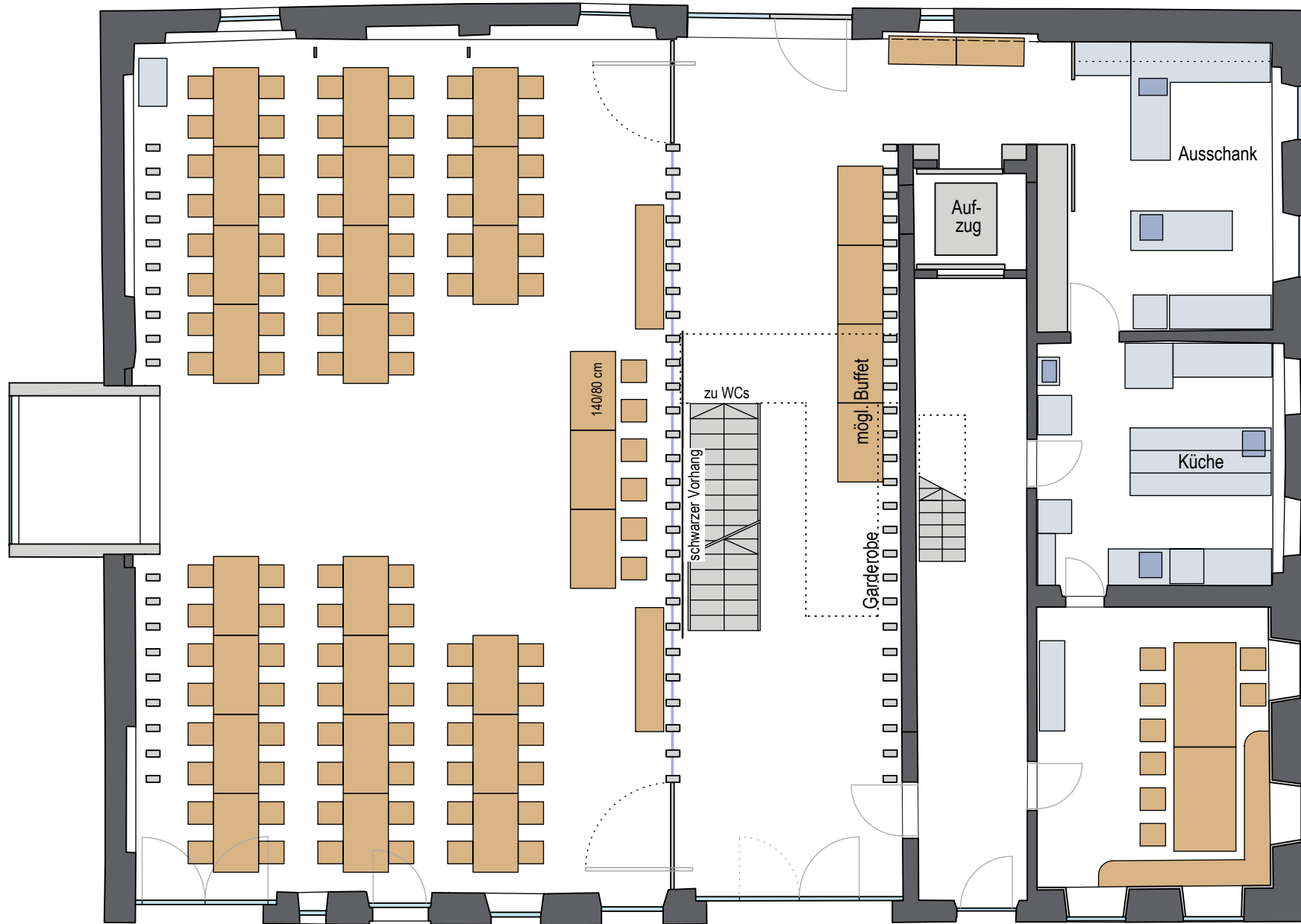


EINGANG

EG.A4

88+6 Pers. 22+3 = 25 Tische

Anlieferung

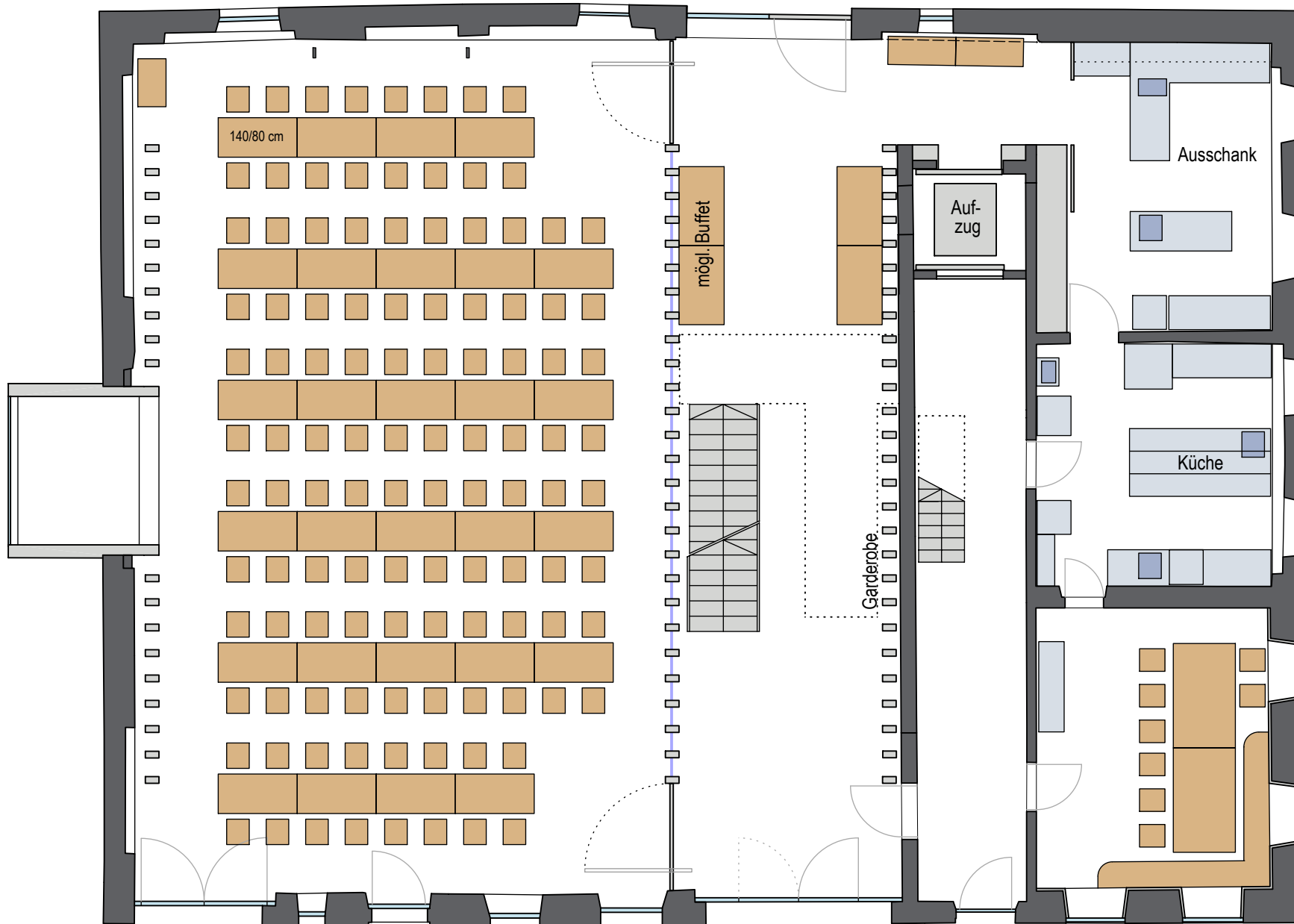


EINGANG

EG.A5

112 Pers. 28+4 = 32 Tische

Anlieferung

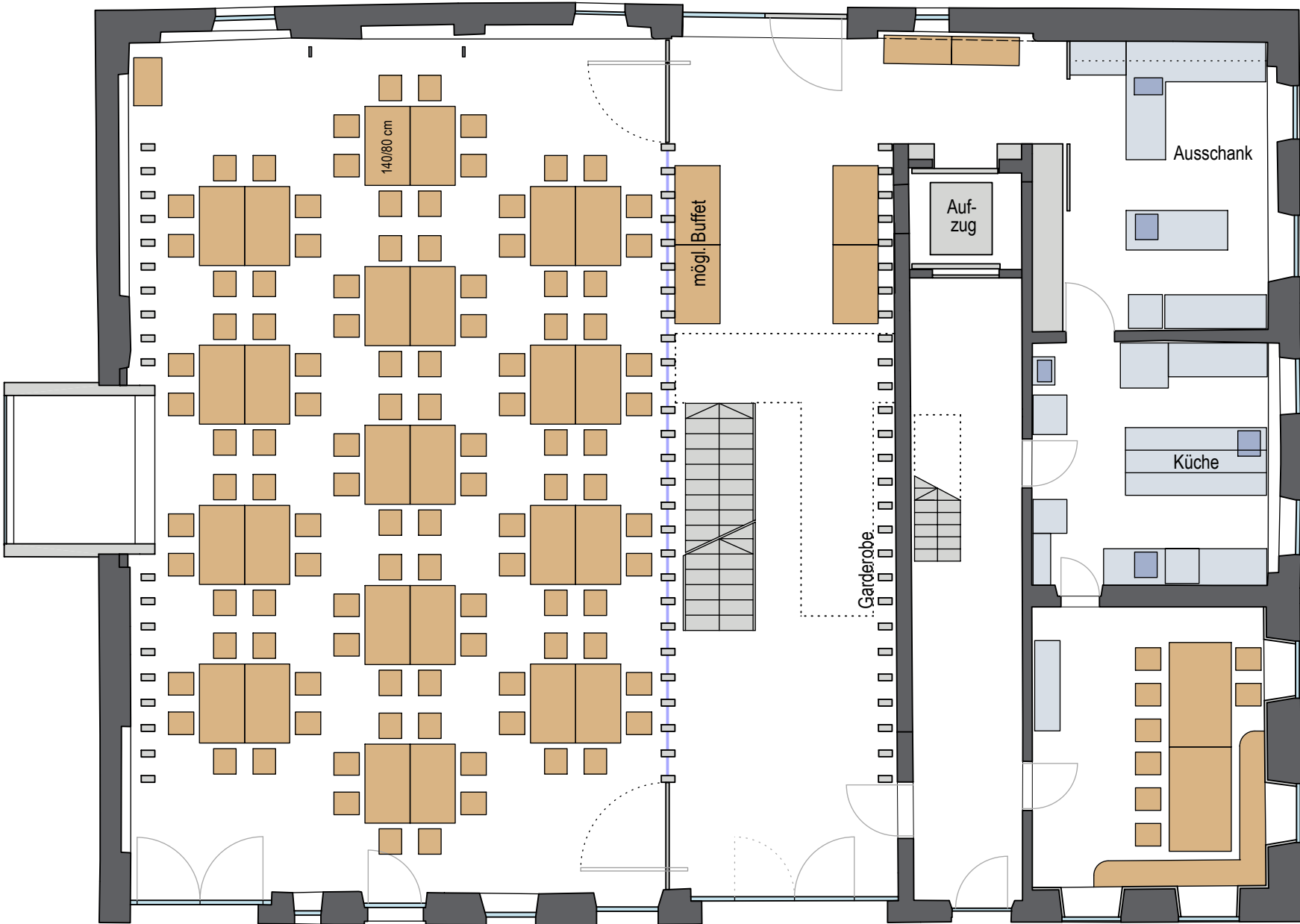


EINGANG

EG.B1

104 Pers. 26+4 = 30 Tische

Anlieferung



EINGANG

EG.C1